

## Apace Unity & ISIS Offload (UIOL)™

Mirror, Archive & Workflow Resilience

..... Making Unity better

**Workflow resilience**

**Data protection in high-speed RAID 6**

**Ubiquitous content access via Ethernet**

**Real-time collaboration editing environment for DNxHD & DVCPro HD**

**Apace UI Offload (UIOL)** is a complementary storage system solution for Avid Unity and ISIS.

UI Offload Hardware/Software suite offers four core media *workflow* enhancement features:

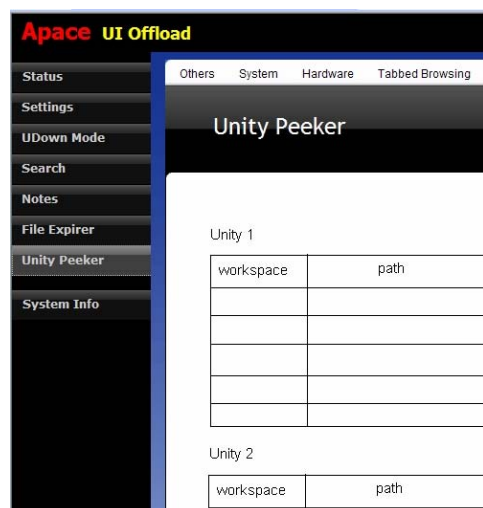
- 1) Online disk-to-disk backup / mirror and incremental archival workflow with **instant** restore
- 2) Real-Time editing and playback for Avid and Non-Avid workgroups
- 3) Managed networked storage consolidation for Avid and non-Avid workflows
- 4) Expanding access to content from any LAN/WAN IP-based client node.

UI Offload platform acts as a proxy to Avid primary storage as well as a secondary archive platform via its performance RAID-6 storage offering **automated backup**, **instant restore**, **alternate workflow** during Unity/ISIS downtime, and multiple systems **real-time editing** directly off of the system, while offering advanced parallel paths of access to its networked storage platform.

UI Offload benefits: **Workflow Resilience, Content Protection, Data Management & Movement, and Workflow Productivity. UI Offload makes post-production more productive and your valuable asset safer!**

**Workflow Resilience** is designed to serve as an alternative workflow independently from Unity/ ISIS. Editors can work off of the system individually and/or in a shared collaboration fashion. It supports multiple streams of DVCPro HD and DNxHD 145. UI offload provides a heterogeneous architecture and Ethernet based connectivity to sustain users work, while Unity/ ISIS system(s) is down or its storage is being rebuilt. Once Unity/ ISIS is back online, the users can **immediately** merge their work back to their previous workspace.

**Content Protection** is packaged in a high density 4U rackmount chassis with up to 24TB of RAID 6 storage. It has redundant hot-swap drives, fans and power supplies and is built with quality enterprise components for 24/7/365 usage. The architecture and implementation are field-proven and have been deployed through hundreds installations worldwide and with years of real world use in broadcast environment. Raid-6 data protection assures recovery from two simultaneous disk failures and no reduction in system response time during normal rebuild.



- Automatic backup of Unity/ ISIS workspaces to RAID 6 storage
- One click to restore your workspace(s).
- **Instant** work resumption after a Unity/ ISIS is back online from maintenance or rebuild.
- Unity/ISIS Down Mode provides an alternative emergency Editing/Playback workflow during Unity/ISIS down and rebuild. Access does not depend on Unity/ ISIS nor its FC connectivity. Editors can immediately continue and collaborate via direct Ethernet access to UI Offload. The heterogeneous architecture and diversified connectivity support an end-to-end **workflow resilience**.
- Unity Peeker allows a system administrator to peek and monitor multiple Unity/ISIS systems via single GUI.
- Media and Project files association provides a quick overview of Avid media files and corresponding project files.
- Offering file and text search capability
- Facilities for data movement, cleaning and system monitoring.
- Simple browser-based GUI for convenient local and remote access, management, collaboration and workflow setup.
- 4U 18/24TB with 10GE Ethernet option.
- Working with multiple Unity/ ISIS systems simultaneously
- Unity Bridge. **Workspace migration and sync** between multiple Unity/ISIS systems

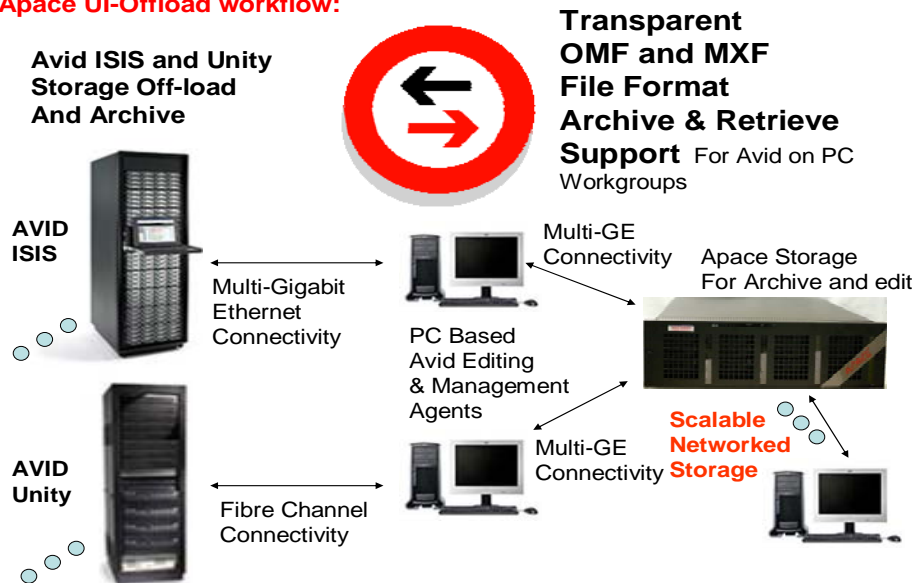
**Data Management & Movement** is designed via an advanced Web based GUI for management of all aspects of large scale data migration and system monitoring being accessed from the same control panel. The goal of the integrated software tools is to easily access Avid primary storage via tools such as Unity Peekr, allowing intelligent decision making on what content to migrate or retrieve. Specifically, workflow allows for automated and intelligent bi-directional movement of the content from Unit/ISIS primary storage to the disk based archival storage and back ***for millions of files & terabytes of data quickly & efficiently without impact on your on-going work.*** Users can protect their content with mirrored RAID 5 or 6, have Ethernet accessibility, and enjoy instant workspace recovery. *UI Offload* provides greater accessibility and content availability to the users. The workflow helps in backup / mirroring, archive and shared collaboration with AVID Unity/ISIS storage without concern of data loss even in RAID 0 on Unity. One ***effective by-product of this flexibility is instant doubling of Avid's usable primary storage space!!!***

Avid Offloading - Mirroring							
Workspace	Mirrored By	Source	Disk Quota	Disk Usage	Action	Status	Last Update
ws1	user1 on demo1(192.168.2.236)	ws1 (Y:\)	0.98 GB	845 MB (84.5%)	Incremental Mirror	Done	Sat Nov 11 20:11:39 PST 2006
ws2	user1 on demo1(192.168.2.236)	ws2 (Z:\)	4.88 GB	4 MB (0.1%)	Incremental Mirror	Done	Sat Nov 11 20:12:45 PST 2006
ws3	user2 on demo1(192.168.2.232)	ws3 (X:\)	2.18 GB	0 MB (0.0%)	Incremental Mirror	Synchronizing	Sat Nov 11 20:10:08 PST 2006
ws5	user2 on demo2(192.168.2.232)	ws5 (M:\)	Unlimited	4 MB	Restore	Waiting	Sat Nov 11 20:15:23 PST 2006
user2local	user2 on demo2(192.168.2.232)	(D:\Avid)	5.86 GB	0 MB (0.0%)	Exact Mirror	Waiting	Sat Nov 11 20:15:11 PST 2006

Last updated: Sat Nov 11 20:15:31 PST 2006  
This page is automatically updated every 90 second.

**Workflow Productivity** is enhanced via complete integration of hardware and software tools to seamlessly address entire mirrored workspaces to single file level granular content migration options and enhanced collaboration. By offering cost effective disk based copy of content that is automatically synching OMF and MXF file databases. Also, users have the option to leverage from this digital library to expand access to the rest of the operations workflows from graphics workgroups to trans-coding stations to non-Avid workstations to prepping the data for broadcast purposes. The goal of the *UI offload* is not only to offer archive, but to make the content accessible and usable by the entire organization that may not have direct access to Avid's primary storage systems. **Also, all content is searchable at directory, file and text level.**

#### Apace UI-Offload workflow:



**Gold Channel Partner: IEEI.TV**  
**Contact: Dennis Bress – President / CEO**  
**p:714-878-1276 Email: [dennis@ieei.com](mailto:dennis@ieei.com) Web: [www.ieei.tv](http://www.ieei.tv)**